



★ REVIEWS  
fleet-trak.co.uk  
★★★★★

# fleet trak

SMARTER FLEET MANAGEMENT

## TELEMATICS, CAMERA & FORS/DVS SPECIALISTS

Contact us for more information  
01233 626590 | [sales@fleet-trak.co.uk](mailto:sales@fleet-trak.co.uk) | [www.fleet-trak.co.uk](http://www.fleet-trak.co.uk)



VISIONTRACK

MANTIS™



EURORA GROUP

# ABOUT FLEET TRAK... CONTENTS

Fleet Trak Limited has spent a decade building up a reputation for excellent telematic solutions to help fleet managers improve the performance of their fleet and meet ROI targets. We are a Premium Partner for WEBFLEET Solutions and provide connected navigation, and vehicle tracking solutions and are one of the UK's largest suppliers and installers of GPS technology.

Our support staff have more than 35 years combined experience in the vehicle telematics industry. Fleet Trak manage over 14,500 vehicles, spread over 500+ customers, covering a broad array of industries across the country, but our quality of service remains the same with no short cuts taken. We leverage our national network of industry-approved engineers to provide short response times, wherever you are.

About Fleet Trak	2
Our Journey	3
Telematics	4
WEBFLEET Solutions	5
Cameras	9
FORS & DVS Kits	10
Reviews	12
Case Studies	14
Wordsearch	15

## Meet the team



Sean Malone  
MANAGING  
DIRECTOR



Lacey Waller  
TECHNICAL SUPPORT  
MANAGER



Jonny Wiggins  
BUSINESS DEVELOPMENT  
MANAGER



Virginia Howes  
COMPANY  
SECRETARY



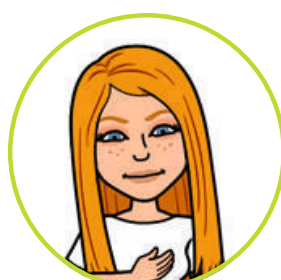
Katie Harwood  
TELESALES  
EXECUTIVE



Lauren Gretton  
OFFICE  
MANAGER



Eliza Garvey  
SENIOR TECHNICAL  
SUPPORT SPECIALIST



Niamh Daly  
TECHNICAL SUPPORT  
ASSISTANT



Kippy  
OFFICE  
DOG

# OUR JOURNEY



**APRIL 2006**

The start: Laptop, dining room table and a lot of enthusiasm.



**MAY 2006**

First customer



**MAY 2007**

Moved into converted garage



**MAY 2008**

Our 1000th vehicle installed



**NOVEMBER 2008**

TomTom Telematics Reseller of the Year



**OCTOBER 2008**

First employee



**FEBRUARY 2011**

First UK reseller to achieve Platinum status



**APRIL 2012**

Moved in Repton Manor, serviced offices



**AUGUST 2013**

5000th vehicle installed



**2016**

10 Year Anniversary



**FEBRUARY 2017**

TomTom Telematics Reseller of the Year



**FEBRUARY 2016**

TomTom Telematics Reseller of the Year



**JULY 2016**

10,000th vehicle installed



**APRIL 2016**

Purchased Unit 1, Bridge Road



**MARCH 2017**

Started selling vehicle CCTV



**OCTOBER 2018**

Fleet Trak's first employee celebrated 10 years at the company



**2021**

Fleet Trak expansion continues

As a certified partner of WEBFLEET Solutions, Fleet Trak can help you to maximise the power of your vehicle operation. **WEBFLEET** equips you with all the tools you need to stay compliant, ensure safety, improve the efficiency of your workforce and boost productivity, while eliminating administrative hassle.

## MAXIMISE THE EFFICIENCY OF YOUR VANS



### TRACK & TRACE

View driving times, mileage and locations of your fleet in real time or over a chosen time period.



### REPORT ON FLEET PERFORMANCE

Get 24/7 access to comprehensive, customisable vehicle and driver insight reports.



### MILEAGE OVERVIEW AND LOGBOOK FUNCTIONALITY

Logbook with real vehicle odometer. Log your private & business trip data easily.



### CRASH DETECTION & DRIVER BEHAVIOUR

Get notified when an accident is detected. Help prevent accidents with WEBFLEET's OptiDrive 360 driver behaviour reports.



### FUEL LEVEL, CONSUMPTION & CO2 EMISSIONS

Read real-time & historical insights on your fleet's fuel usage.



### MAINTENANCE AND SERVICE REMINDERS

Plan maintenance and service tasks based on real-time mileage information. Get automatic notifications about vehicle or engine malfunctions.



### MULTI CAMERA INTEGRATION

WEBFLEET plug-ins allows you to integrate with industry leading dashcam solutions. Help reduce insurance premiums with video footage stored in the cloud and linked to all driver events.



### ORDER OPTIMISATION

Complete your daily tasks by letting WEBFLEET determine the fastest route between each job. All at the click of button.



## AND YOUR TRUCKS...



### TACHOGRAPH MANAGER

Remotely download all tachograph data, driver and vehicle status, and see the information in a convenient reporting dashboard.



### TACHOSHARE

The Tachoshare remote download and archiving module downloads tachograph data from your vehicles on the road and offers connectivity to 3<sup>rd</sup> party analysis providers via the WEBFLEET API.



### REMAINING DRIVING TIMES

Available with the WEBFLEET Tachograph Manager Plus or TachoShare Plus. Daily and weekly remaining driving time for ad hoc dispatch and scheduling and real-time social infringements. Can also be provided as a standalone feature.



### BUSINESS INTEGRATION - .CONNECT & PLUG-INS

The WEBFLEET.connect API provides system integrators access to our open platform, allowing them to build a broad range of bespoke solutions. Such as the Vision Track or TyreWatch plug-ins.



## WEBFLEET SOLUTIONS



### LINK 740

- Fixed Installation (Reliable vehicle tracking)
- Monitors driving behaviour
- Combines with WEBFLEET
- Offers FMS interface and digital tachograph connectivity



### LINK 245

- Self-installation via OBD-II port
- Ideal for small businesses, subcontractors and temporary vehicles or drivers
- Monitors driving behaviour
- Used in combination with WEBFLEET



### LINK 340

- Fixed Installation (For both vehicle and asset tracking)
- Monitors area, movement, maintenance & coupling (when a trailer is connected or disconnected)



### CAM 50

- Dashcam footage with AI technology. Realtime alerts of unsafe driving ie mobile phone usage, smoking, eating, drinking or no seat belt



## ADDITIONAL DEVICES

### LCS 100

Allows access to more precise vehicle data sent directly from your vehicle CAN bus:

- Actual Odometer Reading
- Fuel Level, Fuel Consumption and Notifications



### FMS

When connected to a LINK, the Fleet Management Systems Interface can provide the following:

- Actual Odometer Reading
- Fuel Level, Fuel Consumption and Notifications
- Engine Speed (Rpm)
- PTO (Power Take-Off) Status
- VIN Display
- Adblue Level, Engine Hours And Cruise Control Usage
- Automated Maintenance Tasks (Remaining Time To Service)

## PRO M

Our robust device supercharges fleet performance. Like a handheld computer, it's designed to take on any task. Like a smartphone, it's built for ease and accessibility.

Ideal for dashboards in vans and small vehicles, the PRO M is a complete end-to-end order management solution. It's ready for business right out of the box.

### Benefits

- **Rugged purpose-built device for your business**
  - Designed to withstand harsh environments while running business apps with full performance
  - Android Enterprise Support to allow remote configuration of your devices to your needs (license required)
  - Wide range of fit-for-purpose accessories to maximise productivity and usability
- **Long-lasting and future-proof device**
  - Durable battery to last even in the longest shift –and the battery is replaceable to last for many years
  - Designed to support Android 11 as well as future upgrades up to Android 14
  - Maximum security thanks to regular over-the-air security patch level updates
- **One device –multiple solutions: flexibility to all types of jobs**
  - Fully-integrated with Webfleet and third-party apps to provide any tools required to run your jobs
  - All-in-one work phone functionalities –no separate device needed



## DRIVER TERMINALS / NAVIGATION / DRIVER ID

### PRO 8475 / PRO 8475 TRUCK

- Best-in-class navigation and traffic touchscreen device
- 7" screen and ruggedised design
- Connects with LINK for fleet management via WEBFLEET
- Messaging and orders for workflow efficiency
- OptiDrive 360 driving behaviour support
- Simple and fast updates via Wi-Fi and 4G LTE connection
- Rear-view camera support



## WEBFLEET SOLUTIONS ADDITIONAL FEATURES/PRODUCTS

Get the most out of WEBFLEET and realise its full potential - These are just a few of the many beneficial features that WEBFLEET has to offer!

### MOBILE VEHICLE CHECK APP

WEBFLEET Vehicle Check makes the day-to-day walkaround checks a lot easier and more efficient. It does this by minimising your paperwork and streamlining the compliance process.

The benefit of this app is that it increases road safety, vehicle uptime, digital archive recorded for audits, eliminates tedious paperwork, helps you to stay on top of vehicle conditions and allows you to customise the inspection items to fit your needs.



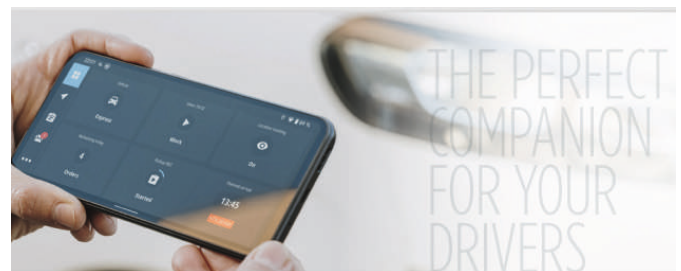
### TACHOGRAPH MANAGER\*

The WEBFLEET Tachograph Manager\* is an all-in-one solution which allows you to store and analyse your tachograph data and gives you insight into the driver's activity. You can use this feature to manage drivers, deadlines and social infringements as well as scheduling reminder notifications via email.



### WORK APP

The WEBFLEET Work App allows your drivers to digitalise and effectively manage their daily tasks and access navigation from one app without any additional hardware. Allows flexibility as we can reassign subscriptions when there are changes with driver employment. The digitised workflow and accurate trip reporting reduces errors and helps you stay compliant with legislation. It only takes a few minutes to set up, so getting drivers on board is quick and easy. The app also always drivers to communicate quickly with the office via two-way text. Drivers can automatically share information with the dispatcher about upcoming jobs.



### TPMS - TYRE PRESSURE MONITORING SYSTEM

WEBFLEET TPMS checks your tyre pressure and temperature in real time. Problems are detected before they lead to repairs and downtime that can become very costly, this is done through predictive tyre management.

TPMS helps to maximise your vehicle uptime by reducing the risk of tyre related breakdowns, failures, and spots issues such as slow pressure leaks. It keeps tyres at the correct pressure for optimal handling and braking distance, improves fuel, emissions, and tyre life span. All this lowers your running costs.



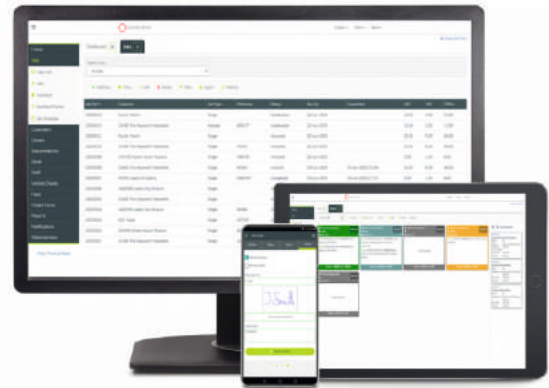
## WEBFLEET SOLUTIONS AND EURORA



Eurora Group's Cyrus TMS suite of software provides industry leading cloud based technology to the Transport industry that has integration with the WEBFLEET platform.

These solutions are proven to deliver tangible benefits to clients such as:

- Increases Revenue & drives down personnel costs
- More efficient planning & improving customer delivery experience.
- Integration with your 3rd party accounts package



### Cyrus software at a glance...

Intuitive planning tools with pro-active resource alerts:

- Digital Whiteboard planning
- Interactive diary view planning

Job execution:

- Resource jobs using real-time cost vs revenue
- Integration into Webfleet for knock on, dynamic manifest ETA's & pro-active driver coaching
- Cyrus ePOD allows data capture, signatures and gain images of 3rd party paperwork



Updates & notifications:

- Cyrus Gateway self-service customer portal
- Track & Trace deliveries
- Embedded email & text notifications

Invoice:

- Perform single or batch invoicing
- Email clients invoices & POD's automatically





## MANTIS AND WEBFLEET SOLUTIONS

# MANTIS™

MANTIS and Webfleet Solutions offer connected CCTV systems providing the most unrestricted access to your video evidence for all vehicle types. With experienced and industry leading engineering and technical teams, MANTIS support will help the smooth running of your business.

### MARKET LEADING CONNECTIVITY

True multi-network M2M 4G data sims with the ability to use all major networks and auto-roam onto the strongest providing the most stable coverage possible.

### FLEXIBLE DATA ALLOWANCE

1GB aggregated package allows data to be shared amongst the fleet so you never run out when you need it or get charged overage fees.

### FAULT NOTIFICATIONS

Don't wait until vital footage is lost before you know a camera was not recording. Be notified to any recording loss or memory failure and resolve with our monitoring team.

### INSTANT REVIEW & REMOTE DOWNLOAD & UPLOADS

Stream & playback any of the footage stored on the memory to quickly investigating an incident and download on demand. No restriction on video clip length or number of downloads.

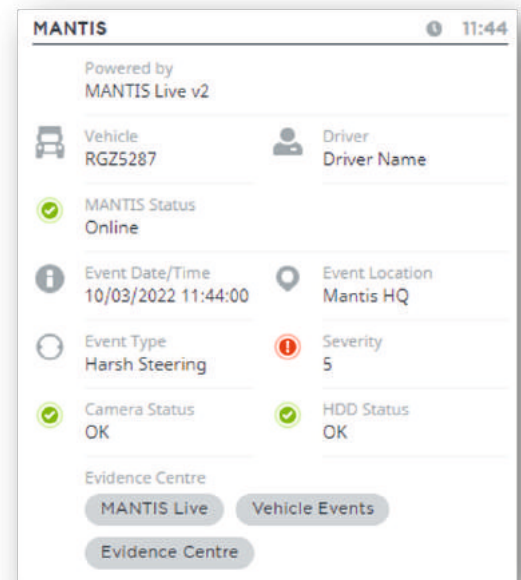
If MANTIS senses a serious event such as hard braking or cornering, footage is automatically uploaded to Evidence Centre with 90 days cloud storage. No need to look through hours of footage to find what you need to act quickly.

### INTEGRATED WITH WEBFLEET TELEMATICS

Webfleet telematics platform allows you to view cameras live and receive fault notifications directly. Access to Evidence Centre 2.0 to sort, manage, comment on and share/download your auto-unloaded collision footage. Enhance driver training with near miss videos and examples of bad driving style to reduce risk and PREVENT accidents from happening.

### MANTIS AI

Auto-upload footage of driver distraction mobile phone use, fatigue and smoking directly into Evidence Centre and access via Webfleet.



## CAMERA AND DVS KITS

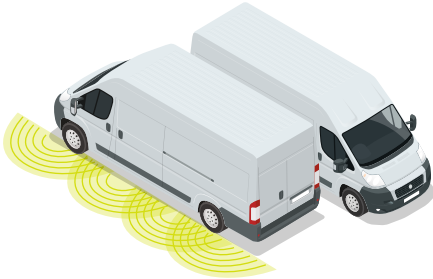


VISIONTRACK MANTIS™

## FORS Kits SILVER

**FORS Silver Panel Van**

This bespoke kit has been specifically for panel van vehicle types.

**This kit includes:**

- Side-scan Kit with Sensors
- Left-turn Alert
- Side-scan Interface
- White Noise Reversing Alarm
- Timer cut-out button
- Mirror Monitor
- HD Side-view Camera
- Side-view Camera Spacers
- Rear-view Camera
- 10 Metre Cable
- Blindspot Signage

**FORS Silver Flatbed Van**

This bespoke kit has been specifically for flatbed van vehicle types.

**This kit includes:**

- Side-scan Kit with Sensors
- Left-turn Alert
- Side-scan Interface
- White Noise Reversing Alarm
- Timer cut-out button
- Mirror Monitor
- HD Side-view Camera
- Side-view Camera Spacers
- Rear-view Camera
- 10 Metre Cable
- Blindspot Signage

**FORS Silver Rigid**

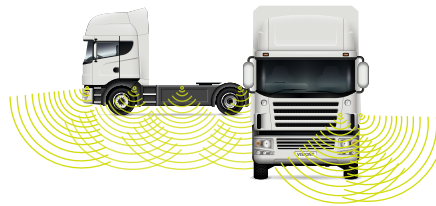
This bespoke kit has been specifically for rigid vehicle types.

**This kit includes:**

- Side-scan Kit with Sensors
- Left-turn Alert
- Side-scan Interface
- White Noise Reversing Alarm
- Timer cut-out button
- Mirror Monitor
- HD Side-view Camera
- Side-view Camera Spacers
- Rear-view Camera
- 10 Metre Cable
- Blindspot Signage

**FORS Silver Artic**

This bespoke kit has been specifically for artic vehicle types.

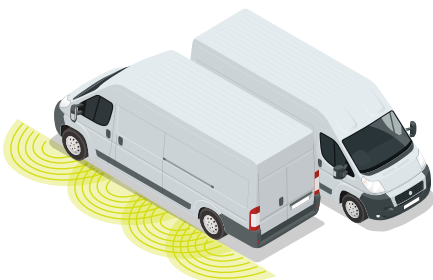
**This kit includes:**

- Side-scan Kit with Sensors
- Left-turn Alert
- Side-scan Interface
- White Noise Reversing Alarm
- Timer cut-out button
- Mirror Monitor
- HD Side-view Camera
- Side-view Camera Spacers
- Rear-view Camera
- 10 Metre Cable
- Blindspot Signage

## FORS Kits GOLD

**FORS Gold Panel Van**

This bespoke kit has been specifically for panel van vehicle types.

**THIS KIT INCLUDES:**

- 5CH Mobile DVR
- Forward-facing Camera
- Side-scan Kit with Sensors
- Left-turn Alert
- Side-scan Interface
- White Noise Reversing Alarm
- Timer cut-out button
- 4CH Monitor
- HD Side-view Camera x 2
- Side-view Camera Spacers
- Rear-view Camera
- 10 Metre Cable
- 5 Metre Cable x 3
- Blindspot Signage

**FORS Gold Flatbed Van**

This bespoke kit has been specifically for flatbed van vehicle types.

**THIS KIT INCLUDES:**

- 5CH Mobile DVR
- Forward-facing Camera
- Side-scan Kit with Sensors
- Left-turn Alert
- Side-scan Interface
- White Noise Reversing Alarm
- Timer cut-out button
- 4CH Monitor
- HD Side-view Camera x 2
- Side-view Camera Spacers
- Rear-view Camera
- 10 Metre Cable
- 5 Metre Cable x 3
- Blindspot Signage

**FORS Gold Rigid**

This bespoke kit has been specifically for rigid vehicle types.

**THIS KIT INCLUDES:**

- 5CH Mobile DVR
- Forward-facing Camera
- Side-scan Kit with Sensors
- Left-turn Alert
- Side-scan Interface
- White Noise Reversing Alarm
- Timer cut-out button
- 4CH Monitor
- HD Side-view Camera x 2
- Side-view Camera Spacers
- Rear-view Camera
- 10 Metre Cable
- 5 Metre Cable x 3
- Blindspot Signage

**FORS Gold Artic Trailer**

This bespoke kit has been specifically for artic vehicle types.

**THIS KIT INCLUDES:**

- 5CH Mobile DVR
- Forward-facing Camera
- Side-scan Kit with Sensors
- Corner-scan Kit with Sensors
- Left-turn Alert
- Side-scan Interface
- White Noise Reversing Alarm
- Timer cut-out button
- 4CH Monitor
- HD Side-view Camera x 2
- Side-view Camera Spacers
- Rear-view Camera
- 10 Metre Cable
- 5 Metre Cable x 3
- Blindspot Signage

### FORS Gold Tractor Only

This bespoke kit has been specifically for tractor units.



**THIS KIT INCLUDES:**

- 5CH Mobile DVR
- Forward-facing Camera
- Side-scan Kit with Sensors
- Corner-scan Kit with Sensors
- Left-turn Alert
- Side-scan Interface
- White Noise Reversing Alarm
- Timer cut-out button
- 4CH Monitor
- HD Side-view Camera x 2
- Side-view Camera Spacers
- Rear-view Camera
- 15 Metre Cable
- 5 Metre Cable x 3
- Blindspot Signage
- Suzi Coil
- Suzi Input
- Camera Input Splitter
- Auto Image Splitter

### FORS Gold Trailer Only

This bespoke kit has been specifically for trailer units.



**THIS KIT INCLUDES:**

- Suzi Input
- HD Side-view Camera
- 20 Metre Cable
- Blindspot Signage
- Warning Signage

## DVS Kits

### DVS Rigid

This bespoke kit has been specifically for rigid vehicle types.

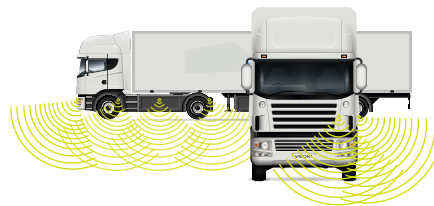


**THIS KIT INCLUDES:**

- Side-scan Kit with Sensors
- Left-turn Alert
- Side-scan Interface
- Timer cut-out button
- 4CH Monitor
- HD Side-view Camera
- Side-view Camera Spacers
- 10 Metre Cable
- Blindspot Signage

### DVS Tractor and Trailer

This bespoke kit has been specifically for tractor and trailer vehicle types.



**THIS KIT INCLUDES:**

- Side-scan Kit with Sensors
- Left-turn Alert
- Side-scan Interface
- Timer cut-out button
- 4CH Monitor
- HD Side-view Camera
- Side-view Camera Spacers
- 10 Metre Cable
- Blindspot Signage

### DVS Tractor

This bespoke kit has been specifically for tractor vehicle types.



**THIS KIT INCLUDES:**

- Side-scan Kit with Sensors
- Left-turn Alert
- Side-scan Interface
- Timer cut-out button
- 4CH Monitor
- HD Side-view Camera
- Side-view Camera Spacers
- 10 Metre Cable
- Blindspot Signage

### DVS Base

This bespoke base kit has been specifically rigid and tractor units.



**THIS KIT INCLUDES:**

- Side-scan Kit with Sensors
- Side-scan Interface
- Timer cut-out button
- 1CH Monitor
- HD Side-view Camera
- 10 Metre Cable
- Blindspot Signage

### FAQs for DVS

1. Safety permit for all lorries more than 12 Tonnes – Entering or operating in Greater London.
2. From 26 October 2020 all HGV need safety permits.
3. Minimum DVS rating will be one Star that will increase to 4 star by 2024.
4. No Charge for safety permit.
5. One and two star rated vehicle will be granted permits until 2024.
6. Three, four and five star rated vehicles will be granted a 10 year permit.
7. One Star;
  - Mirror fitted to front of vehicles
  - Mirror fitted to front of vehicles
  - Side under-run protection
  - External pictorial Stickers
  - Sensor System
  - Audible vehicle – when moving left
  - Camera monitoring system near side
8. If you get our 180 degree lens then you will get 5 star rating on the vision side, as to get 5 star rating on vision is be able to see a person closer to the vehicle.
9. Permits will be give electronically, no paper copy. It is done through VR.
10. Fleet Manager will have to apply for the for the safety permit – [tfl.gov.uk/direct-vision-permit](https://tfl.gov.uk/direct-vision-permit).
11. Fines will be £550 for every breach done.

*Tractors for articulated vehicles* Exempt  
 All trailers used with the exempt tractor unit will be required to fit sideguards (unless covered by an additional exemption)

*f. Exemptions from warning signage*

Vehicle type	DVS exemption
Tractors for articulated vehicles	Exempt All trailers used with the tractor unit will be required to fit warning signage

# OUR REVIEWS



**Couldn't ask for a better service. As a whole Fleet Trak have been excellent and I'm glad i choose Fleet Trak for our Fleet performance system. 10/10!!"**

OVERALL RATING ★★★★★

**"The service and knowledge is great"**

OVERALL RATING ★★★★★

**"It's good to know someone is always on the end of the phone"**

OVERALL RATING ★★★★★

**"continuously provided a great service"**

OVERALL RATING ★★★★★

**"Great support and a great system"**

OVERALL RATING ★★★★★

**"Fantastic service"**

OVERALL RATING ★★★★★

**"Good service, good products and really helpful staff"**

OVERALL RATING ★★★★★

**"always reliable"**

OVERALL RATING ★★★★★

**"This is a must use service"**

OVERALL RATING ★★★★★

**"Quick to respond to my requests"**

OVERALL RATING ★★★★★

**"Would highly recommend it to any company"**

OVERALL RATING ★★★★★

***“Always happy with the service given”***

OVERALL RATING ★★★★★

***“professional, polite and nothing is ever too much”***

OVERALL RATING ★★★★★

***“All office staff and engineers are polite and courteous”***

OVERALL RATING ★★★★★

***“Always friendly and swift service”***

OVERALL RATING ★★★★★

***“Fleet Trak are very quick and easy to deal with”***

OVERALL RATING ★★★★★

***“efficient and super helpful will not go anywhere else”***

OVERALL RATING ★★★★★

***“Pleasant to deal with, customer focused and quick response times.”***

OVERALL RATING ★★★★★

***“I would highly recommend Fleet Trak”***

OVERALL RATING ★★★★★

***“the customer service is brilliant”***

OVERALL RATING ★★★★★

***“Great company, great customer service.....highly recommended”***

OVERALL RATING ★★★★★

***“I’d recommend Fleet Trak to anyone”***

OVERALL RATING ★★★★★

***“Very professional and highly efficient”***

OVERALL RATING ★★★★★

***100% of reviewers recommend*** fleet  **trak**

Read all our reviews: [www.reviews.co.uk/company-reviews/store/fleet-trak](http://www.reviews.co.uk/company-reviews/store/fleet-trak)

# CASE STUDIES

“  
**MARSHALLS HAVE NOW SAVED APPROXIMATELY £350,000 ACROSS THEIR FLEET!**  
 ”



**THE DELIVERY GROUP**  
 Save £150,000 on fuel and £30,000 per year on maintenance.

**£150,000**

**ELIS UK LTD**  
 One of our best investments, helping save £1.8 million in fuel

**£1.8m**

**10%**  
**MARSHALLS**  
 Saved 10% on fuel across 200 vehicles, in the first year alone.

**BLACKBOURNE INTEGRATED M&E**  
 88% reduction in speed and a 66% reduction in accidents

**LONDON GOODS TRANSPORT LTD**  
 increased annual KMPL by 148% over two years

**148%**

**FULLER GRAB HIRE**  
 MPG improvement of 7.2%

**7.2%**

“  
**KEITH ELKINGTON TRANSPORT MASSIVELY INCREASED WORKFLOW EFFICIENCY**  
 ”



**25%**  
**H SIVYER**  
 Accidents/ incidents reduced by 25% between April 2016 and April 2017

**27%**  
**TOSHIBA**  
 27% improvement in MPG

**BOC**  
 Huge insurance savings

**J REDDINGTON LTD**  
 0.34% MPG improvement – achieving an average 8.79 per vehicle in one year

**0.34%**



# WORDSEARCH

W B U Y F R O M U S E S E  
 E E F F I C I E N C Y B U  
 B E S T I N T H E B I Z R  
 F L S P K V P F D D I M C  
 L E T M S V E E O C S A A  
 E S L S N E Q S C R T N L  
 E T H E G R E A T E S T L  
 T N O E E U R O R A S I U  
 N O O N E B E T T E R S S  
 V I S I O N T R A C K E N  
 S U P E R S E R V I C E O  
 S A F E T Y I I R V T E W  
 E N V I R O N M E N T E N

BESTINTHEBIZ

BUYFROMUS

CALLUSNOW

DVR

EFFICIENCY

ENVIRONMENT

EURORA

FORS

FIVESTAR

A prize will be given for every correctly completed word search!

Hand yours in and receive a prize from us:

[info@fleet-trak.co.uk](mailto:info@fleet-trak.co.uk)

Fleet Trak, Unit 1 Bridge Road  
Business Centre, Bridge Road,  
Ashford, Kent TN23 1BB

MANTIS

NOONEBETTER

SAFETY

SUPERSERVICE

TPMS

THEGREATEST

VISIONTRACK

WEBFLEET



# YOU HAVE REACHED YOUR DESTINATION



## Contact Us

01233 626590

[sales@fleet-trak.co.uk](mailto:sales@fleet-trak.co.uk) | [www.fleet-trak.co.uk](http://www.fleet-trak.co.uk)

Find us on LinkedIn

Fleet Trak Ltd, Unit 1 Bridge Road Business Centre,  
Bridge Road, Ashford, Kent TN23 1BB

