



HAAS ALERT



TOWING





# Real-time Digital Alerts Sent to Motorists When Towing Operators Are On-scene

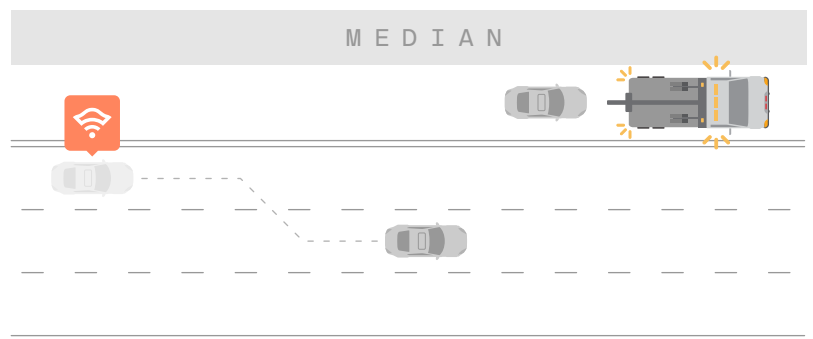
When tow personnel are assisting motorists in and around the road, Safety Cloud® by HAAS Alert delivers real-time digital alerts to approaching motorists and vehicles. Drivers that receive real-time notifications in advance have more time to slow down, move over and make safer decisions that save lives.



## Real-time Digital Alerts

Motorists approaching emergency response and roadside assist personnel receive alerts inside their cars in a way they can't miss.

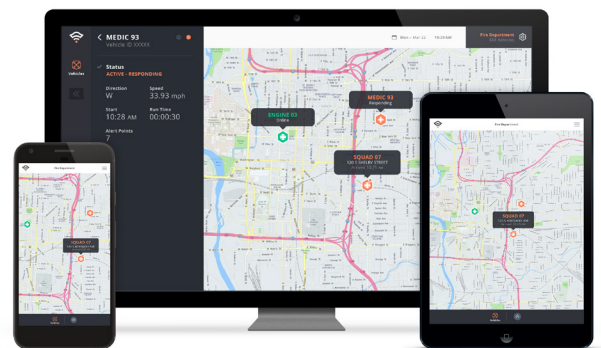
-  Motorists take notice and proceed with more caution when responders are on-scene
-  Motorists receive more time to comply with "Move Over" laws



## Situational Awareness & Performance

Real-time map-based dashboard available on any device

- Fleet/vehicle location and status (e.g., "responding," "on-scene")
- Active and historical information of all incidents
- Statistics on number of drivers and vehicles alerted, incidents, runs performed, time-to-scene, time on-scene





HAAS ALERT



## Fleet Activation



### Responder-to-Vehicle (R2V) HA-5 Transponder

- Connects emergency flashing lights
- When emergency flashing lights are "ON," vehicle is transmitting real-time digital alerts via the HAAS Alert Safety Cloud®
- Easy installation, no down-time for vehicles
- 100% passive, no additional steps for personnel
- No data plan

Ask your sales rep about HAAS Alert Direct (HA-D) connectivity for large fleets



### Real-time Data Feed FleetFusion

- Integrate data into existing dashboards and systems (e.g. traffic management centers, ArcGIS)
- Stream real-time fleet vehicle location and responding status
- Improve overall situational awareness
- Enrich reporting and analytics

HAAS Alert is the leader in road-critical safety for roadside fleets and operators

