

VIDEMUS

WEBFLEET TECHNOLOGY



CERTIFIED PARTNER



ICanProve.IT

Videomatics | LiveView | PlayBack | Connected | Tamper-proof



ICanProve.IT

FLEXIBLE

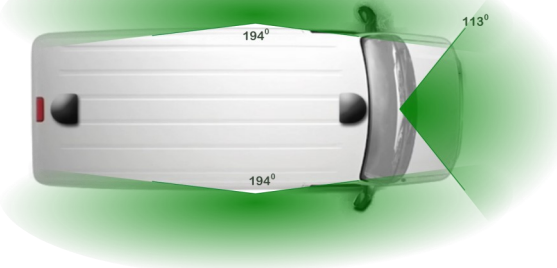
SOLUTIONS TO FIT EVERY VEHICLE



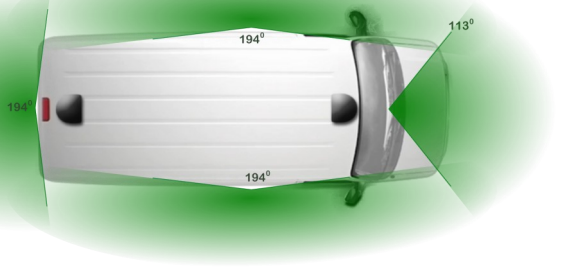
Two-cam (front & rear)



Three-cam (360°)



Four-cam (360°)



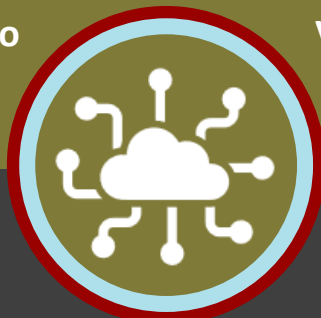
Remote video
access



VideoMatics
analytics



Occupancy counter



up to 16 lenses
per vehicle



Axle-weight



CAMERAS

CUTTING-EDGE CAMERA SOLUTIONS

Top-of-the range wide-angle lenses, all sourced from Axis, give our Videmus solution complete clarity, with the reliability and rigour that you would expect from an enterprise-level product.

Watch live or later

Our camera solutions stream video to the desks and devices of leading fleet operators from around the world.

Incident management becomes straightforward when video combines with all vehicle data, including driver behaviour trends.

What is Videmus?

Videmus is a Latin word that translates as 'I see and observe'.

Videmus cameras are top-quality, rugged, discrete & tamper-proof. Wide-angle/ fish-eye lenses allow full 360° visibility. Best of all, our lenses are cloud-connected for secure, single-click, remote access.

All cameras are linked to the cloud, to enable you to view footage from any lens, any time, anywhere, on any device with an internet connection.

Digital fingerprints, tamper-proof fitting, 5-yr secure cloud storage, and 28 days on-board give you confidence in having the footage you need when you need it.



ICanProve.IT



VIDEOMATICS

YOUR DATA AT YOUR FINGERTIPS

VideoMatics is a single, real-time point-of-access for reporting, accessing and analysing all your vehicle data. We collate on-board telematics, camera, CAN bus, tacho and in-house records, along with driver data, and display it in an intuitive, secure, online portal.

Additional data feeds:



**First notification
of loss (FNOL)**



**Driver check apps
(Fleet Check)**

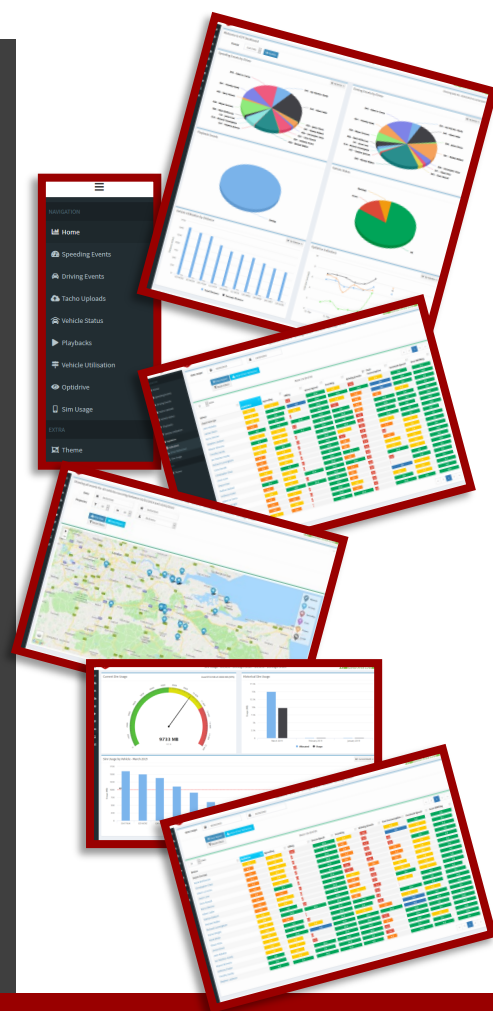


Fuel cards



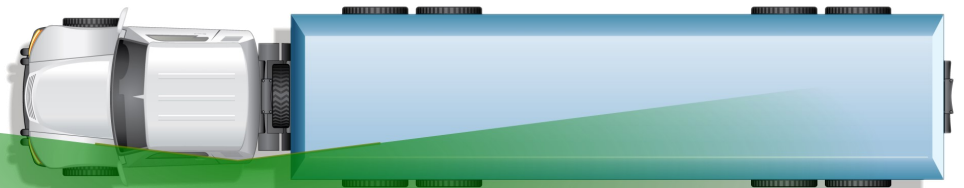
Licence check

NB: The first 12 months of VideoMatics is free with each new subscription.

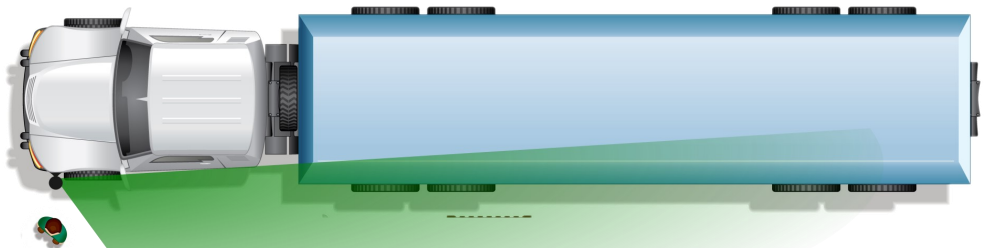


DVS 2020

DIRECT VISION STANDARD TECHNOLOGY



Fish-eye lens view with ICPI technology

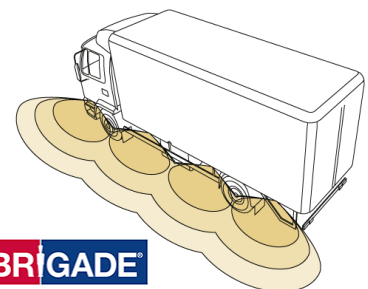


Traditional analogue camera view

The Direct Vision Standard legislation for London reflects how easy it would be for a driver to see a pedestrian or cyclist, without blind spots.

ICanProve.IT technology provides a safety system that keeps road users safe, meets legislative measures, allows you to apply for a safety permit, and protects your drivers from the horror of significantly harming a fellow human who they simply couldn't see.

You will never regret installing safety equipment. It's the best investment you can make. Brigade side sensors, with alerts, and our own side lens with in-cab display, will help improve fleet safety and compliance.



ICanProve.IT



INTEGRATION

ADDITIONAL OPTIONAL SENSORS

Third-party systems, where allowed, integrate fully with our online reporting platform – with the ability to define parameters for automated alerts and/or video download triggers.



Axle-weight monitors

Many systems are available that alert the driver to overloads or uneven loading - such as those from VWS or Axtex. We connect sensors to these stand-alone units to our connected hub.

Amazing functionality follows:

- Data analysis by driver/vehicle
- Alerts via SMS/email/API
- Driver action audit trail
- Trend reporting



Occupant counting

Integrate your third-party people counter with our system and you will gain the ability to interact with it in real-time. And this will be reported in to the one easy-to-use WEBFLEET portal – the same one that you use every day for all of your telematics and fleet management needs.



“NO MORE SKETCHES, NO MORE CHASING PEOPLE FOR WRITTEN ACCOUNTS. WE KNOW WHAT HAPPENED, CAN PROVE WHAT HAPPENED, CLOSE THE CASE AND MOVE ON.”

CASE STUDY



Since installing Videmus technology across their fleet, accessed from within their WEBFLEET portal, Elis has:

- No need to hold £Ms provision against unresolved claims
- £500–£1900 saved on each of many claim interventions
- Fuel economy savings of 12%
- Carbon emissions cut by more than 2000 tonnes

Together, these have produced a comprehensive and rapid manifold return on investment. Yet, it is the unpredicted benefits that have really won the allegiance of Peter Kelly (Elis Group Compliance and Fleet Manager):

- ◆ *Drivers are protected from unfair or untrue allegations*
- ◆ *Training is transformed with footage of actual events*
- ◆ *Automation means there is no need to lose time downloading data manually or holding vehicles in the yard*
- ◆ *The data available transforms driving styles for the better*

“WITH THIS GREAT SYSTEM, I AM IN CONTINUOUS AND EFFECTIVE CONTROL OF MY VEHICLES AND DRIVERS AT ALL TIMES.”

Peter Kelly (Elis Group Compliance and Fleet Manager)