



Webfleet Video

Safeguard your drivers and road users with fleet video telematics.



Webfleet Video

Safeguard your drivers and fleet with video telematics.

Webfleet Video offers a comprehensive suite of products and services designed to meet the most demanding use cases in the fleet management market. This solution provides a vast array of possibilities and combinations, all powered by the robust Webfleet platform and its advanced functionalities.

BENEFITS



SAFETY

Video evidence following a traffic incident is crucial for enhancing road safety and determining liabilities. The use of video telematics and artificial intelligence proactively alerts drivers when a risk is detected. These solutions prevent hundreds of accidents every day and help drivers stay more attentive and focused while driving.



SECURITY

There is a rapidly increasing trend in vehicle, cargo, and driver security. As crime rates rise, the market demands solutions that help protect their assets and employees, as well as deter criminals. The new Webfleet Video solutions are highly focused on providing these kind of solutions.



COMPLIANCE - LOCAL REGULATIONS

European legislators have long been recommending the use of technology that helps both drivers and road users improve their safety, either by enhancing visibility or through visual and auditory alerts. This makes solutions like video telematics indispensable.



INSURANCE - COST SAVINGS

Dash cameras offer significant benefits to the insurance industry by providing clear, reliable footage of road incidents. This footage helps prevent fraudulent claims, ensures accurate claims assessment, and speeds up the claims process, reducing administrative costs. Additionally, dash cams protect drivers from wrongful liability, further reducing payout costs.



CAM Lite



WEBFLEET VIDEO

- The CAM Lite is integrated with all the functionalities and platforms. Webfleet UI, Webfleet Mobile, Logbook.



ARTIFICIAL INTELLIGENCE / MACHINE VISION

- ADAS: tailgating, TTC, lane crossing, rolling stop, stop and go, and more.
- DMS: phone usage, fatigue, distraction, seatbelt.



DRIVING EVENTS

- Driving events are based on either the LINK device's driving events (when used as an accessory with a LINK) or the CAM Lite embedded G-sensors (when used as the main unit).



COMPATIBILITIES

- 1X auxiliary camera (USB connection) max 5 meters distance.
- 1X external emergency recording button.



ACCESSORIES

- Auxiliary cameras: rear, DMS, square.
- Lens covers driver and road.
- Cables: OBD power supply, external emergency button.

SPECIFICATIONS

Camera resolution:

Road-facing: up to 1080P Full HD with integrated night vision

Driver-facing: 1920 x 1080 Full HD

Memory:

2GB RAM / 16GB internal Storage

128GB SD card included/ Up to 512GB compatible

Connectivity: 4G + 3G/2G Fallback

Battery and power supply:

5F SuperCAP (12 seconds backup power supply)

Permanent and Ignition power + movement detection. 12/24V

Emergency button

Environment: -20 to +70 °C

What is in the box:

Dash-camera, mounting bracket, 128GB SD and SIM card (inserted), hardwire cable kit, Hex tool, user guide, tamper-proof case

Tamper proof cover

4G LTE CAT6
3G/2G fallback

LED indicator

Microphone
(only enabled upon request)

MicroSD 128GB
included
(up to 512GB
compatible)

Forward camera
up to full HD 1920x1080

Emergency
button

Inward camera
Full HD 1920x1080.
Night vision

Speaker
voice alerts

USB input.
For external cameras
and accessories



CAM Pro



WEBFLEET VIDEO

- The CAM Pro is integrated with all the functionalities and platforms. Webfleet UI, Webfleet Mobile, Logbook.



ARTIFICIAL INTELLIGENCE / MACHINE VISION

- ADAS: tailgating, TTC, lane crossing, rolling stop, stop and go, and more.
- DMS: phone usage, fatigue, distraction, seatbelt.



DRIVING EVENTS

- Driving events are based on either the LINK device's driving events (when used as an accessory with a LINK) or the CAM Pro embedded G-sensors (when used as the main unit).



COMPATIBILITIES

- 4X auxiliary camera (TVI connection) max 60 meters distance.
- NFC reader.
- 1X external emergency recording button.



ACCESSORIES

- Auxiliary cameras: rear, DMS, square, dome.
- Lens cover: driver and road.
- Cables: OBD power supply, external emergency button, truck and trailer cables, TVI extensions.

SPECIFICATIONS

Camera resolution:

Road-facing: up to 1080P Full HD with integrated night vision

Driver-facing: 1920 x 1080 Full HD

Memory:

3GB RAM / 32GB internal storage

128GB SD card included/ Up to 2TB compatible

Connectivity: 4G + 3G/2G Fallback

Battery and power supply:

10F SuperCAP (18 seconds backup power supply)

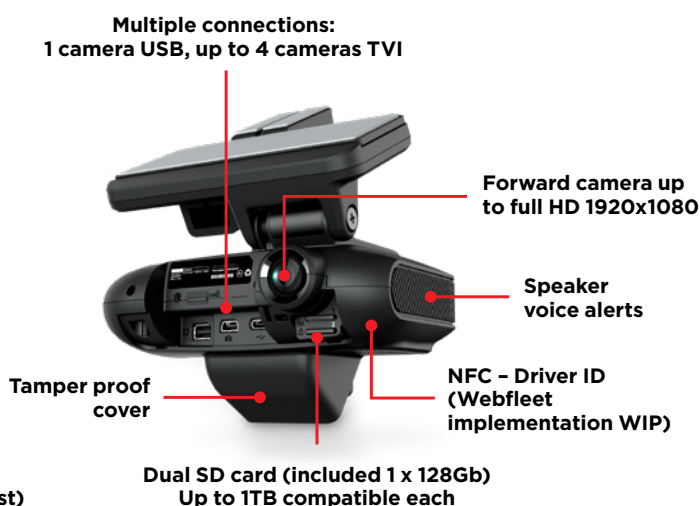
Permanent and ignition power + movement detection. 12/24V

Emergency button

Environment: -20 to +70 °C

What is in the box:

Dash-camera, mounting bracket, 128GB SD and SIM card (inserted), hardwire cable kit, hex tool, user guide, tamper-proof case





Auxiliary DMS Camera

The auxiliary Driver Monitoring System (DMS) camera is ideal for scenarios where the primary dash camera cannot fully capture the driver's face, thereby enhancing the performance of driver-facing AI.



FEATURES



DRIVER MONITORING SYSTEM

- Higher accuracy on driver behavior detection by adding this external camera to the CAM Lite or CAM Pro.



EASY INSTALLATION

- Camera can be mounted in all positions, by adapting the different angles on the base and the camera. Direct connection to main dash-cam for power supply.



COMPATIBILITY

- CAM Pro
- CAM Lite

SPECIFICATIONS

Camera resolution:
1080P/720P

Image sensor:
SOI F32

IP (Waterproof): no

AI detection supported

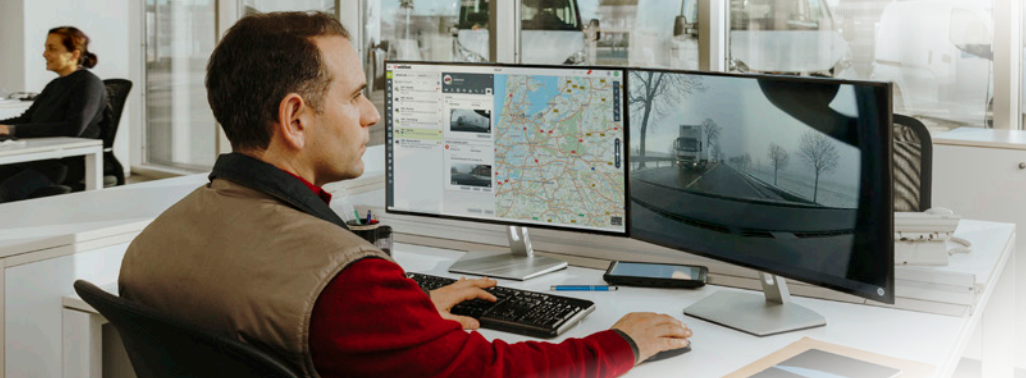
Video output:
USB
TVI

Cable length:
2.2 meters cable + 2 meters adaptor =
4.2 meters

IR LED: 6pcs (night vision)

Indicator LED: red / green

Power supply: 5V direct connection to
CAM Lite/CAM Pro



Auxiliary Square Camera

The auxiliary square camera is ideal for monitoring the interior of a vehicle, including the cargo inside a trailer, and is especially suited for extreme weather conditions due to its IP69 protection.

FEATURES



ROBUST UNIVERSAL CAMERA

- The square auxiliary camera can be used in multiple different use cases and environments.



SECURITY

- Cargo monitoring, fuel theft, trailer/container surveillance are some of the typical use cases for these cameras.



COMPATIBILITY

- CAM Pro
- CAM Lite
- PRO X multicradle

SPECIFICATIONS

Camera resolution:
720P

Image sensor:
SONY

IP (waterproof): IP69

Video output:
TVI (Pro)
USB (Lite)

Cable length:
5-meter AUX SquareLite
1-meter AUX SquarePro

IR LED: 10pcs (night vision)

Indicator LED: red / green

Power supply:
12V direct connection to CAM Lite/CAM Pro



Auxiliary Rear Camera

The auxiliary rear camera is designed for light to medium vehicles. It is intended to be installed on the interior and mounted on the rear windshield, providing an easy installation for basic rear-view applications.

FEATURES



VIDEO RECORDING AND AUTOMATIC UPLOADS

- When connected to the CAM Lite or the CAM Pro the vehicle will be covered in almost a 360° view, providing the full context when an incident or risk takes place.



EASY INSTALLATION

- The rear camera is easily installed in the interior of the vehicle, mounted directly on the rear windshield.



COMPATIBILITY

- CAM Pro
- CAM Lite
- PRO X multicradle



SPECIFICATIONS

Camera resolution:
1080P/720P

Image sensor:
SONY

IP (waterproof): no

Video output:
TVI (Pro)
USB (Lite)

Cable length:
8 meter

IR LED: no

Indicator LED: no

Power supply: 5V direct connection to
CAM Lite/CAM Pro



Auxiliary Dome Camera

The auxiliary rear camera is designed for light to medium vehicles. It is intended to be installed on the interior and mounted on the rear windshield, providing an easy installation for basic rear-view applications.

FEATURES



VIDEO RECORDING AND AUTOMATIC UPLOADS

- When connected to the CAM Pro the vehicle will be covered in almost a 360° view, providing the full context when an incident or risk takes place.



EASY INSTALLATION

- The rear camera is easily installed in the interior of the vehicle, mounted directly on the rear windshield.



COMPATIBILITY

- CAM Pro
- PRO X multicradle

SPECIFICATIONS

Camera resolution:
720P

Image sensor:
SONY

IP (waterproof): IP69K

Video output:
TVI (Pro)

Cable length:
1 meter

IR LED: 9 PCS

Indicator LED: no

Power supply: 12V direct connection to
CAM Lite/CAM Pro

Lens Covers

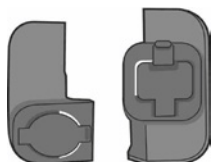


PRIVACY BY DESIGN

- Lens covers to avoid recording in restricted areas or keeping privacy of the drivers or passengers when required.

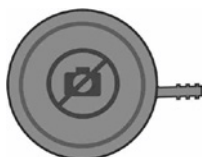
SPECIFICATIONS

Material: Robust plastic
Easy fit
Waterproof



The CAM Lite camera cover, allows to block both internal and road-facing cameras for privacy purposes or restricted recording areas.

Grey-black color.



The CAM Pro lens cover road, allows to keep privacy on the road and comply with restricted area regulations against recording.

Red color.



The CAM Pro lens cover driver, allows to keep privacy of the driver and passengers.

Red color.

Truck and Trailer



DEDICATED CONNECTORS

- The truck and trailer special connectors open all possibilities to connect/disconnect cameras and accessories between truck and trailers or containers in a fast and reliable way.

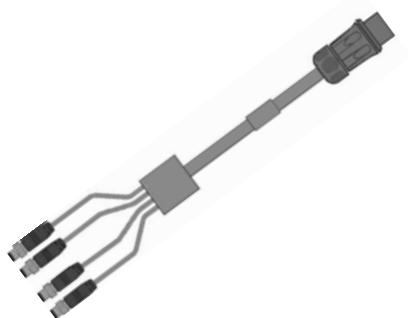
SPECIFICATIONS

Material: Robust plastic
Easy connection/disconnection
Waterproof



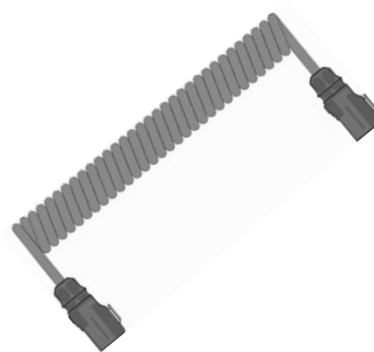
COMPATIBILITY

- CAM Pro
- PRO X multicradle



The CAMPro Fast Connector 1to4, enables a fast connection/disconnection with the spring plug that connects truck and trailers.

On one side male connector to Spring Cable, on the other side, 4 TVI male connectors to auxiliary cameras.



The Spring Cable is a flexible 4.5 meters connector, waterproof and temperature resistant, ready for truck and trailer switching.

Both sides fit female connectors to connect to the CAMPro Fast Connector 1to4.

Cables Accesories



COMPLETE SET OF CABLES

- The Webfleet Video portfolio includes a complete set of cables that enables multiple use cases and combinations.



COMPATIBILITY

- CAM Pro
- *OBDII power supply compatible with CAM Pro and CAM Lite

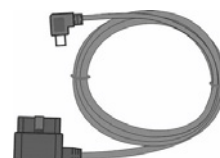


The Cable 1to4 CAMPro, enables the CAM Pro to connect to 4 auxiliary cameras via TVI connection. It includes the power supply wires, panic button connection, 4 TVI male connectors (to auxiliary cameras), and vehicle signals (reverse, inputs/outputs).



These extension cables enable the installation of auxiliary cameras for CAM Pro at larger distances. Two length options, 5 and 10 meters.

Two TVI connection options, female to female, and male to female.



The OBDII power supply cable brings the possibility to connect the CAM Pro and the CAM Lite easily as a plug and play option. It includes an external connection for panic button.

SPECIFICATIONS

Material: Robust plastic
Easy connection/disconnection
Water-resistant

Other Accesories



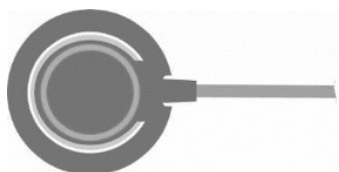
VIDEO RECORDING AND AUTOMATIC UPLOADS

- The CAM Lite and Pro, always records when the ignition is on and during movement and standstills. Some accessories enable different use cases.

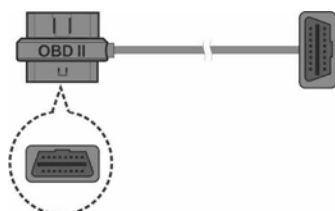


COMPATIBILITY

- CAM Pro
- CAM Lite



External panic button is perfect for those cases where the driver doesn't reach the dash camera or when the button should be hidden.



The OBDII Splitter allows to connect the CAM Pro and CAM Lite to the OBDII port with the OBD PowerSupplyCable accessory, leaving a free OBDII port.

SPECIFICATIONS

Material: Robust plastic
Easy connection/disconnection
Water-resistant
Panic button (emergency recording):
Operating temperature: -20 to 70°C
Connection: to CAM Pro and CAM Lite power supply connector.
LED: On under press
Behavior: emergency recording and video upload after press.
Cable length: 2.5 meter

Advance driver Assistance AI - ADAS



MACHINE VISION ARTIFICIAL INTELLIGENCE - ADAS

- The CAM Lite and the CAM Pro include a comprehensive stack of ADAS AI features focused on the vehicles and the road.
- All the ADAS features will start working when the camera alerts “device ready”, and after an internal auto-calibration (appr. 4 min.) to detect road and correct “horizon level”.



TAILGATING

- This distraction event will be triggered when the driver turns his head to the left or right for longer than the below detection time (default 7 sec.).
- When the vehicle speed exceeds 20 km/h, the distraction function will start to work.
- When wearing sunglasses and masks, this function is currently not supported.



TIME TO COLLISION - TTC

- The event will be triggered when the vehicle is too close to the front vehicle and the collision time is less than the threshold. (default trigger TTC 650ms).
- Detecting when vehicle speed is exceeding 40 km/h.
- Detected Objects: car, truck, bus. Includes common construction vehicles and trailers.



LANE CROSSING

- The event will be triggered when the vehicle leaves the lane and stays on the lane markings (default 5 sec.).
- Detecting when vehicle GPS speed exceeds 60 km/h.



ROLLING STOP - STOP SIGN VIOLATION

- When the camera detects a stop sign, there will be a voice reminder first.
- The camera will alert the stop violation and create a video event when the vehicle moves more than 20m away from the stop sign and the speed was always above 5km/h.



STOP AND GO

- The event will be triggered when waiting in a lane, the vehicle in front has started from a standstill, and the self has not moved within the configured distance (default 9 m).
- This alert won't create a video event in Webfleet.
- The vehicle speed must be at 0 km/h and the vehicle ahead stopped (default 3 sec.).
- Detected Objects: car, truck, bus. Includes common construction vehicles and trailers.

Driver monitoring system AI - DMS



MACHINE VISION ARTIFICIAL INTELLIGENCE - DMS

- The CAM Lite and the CAM Pro include a comprehensive stack of DMS AI features focused on the driver's behaviors.
- All the DMS features will start working when the camera alerts "device ready", and after an internal auto-calibration (appr. 4 min.) to detect the driver.



PHONE USAGE

- The event is triggered when the driver holds the phone close to the ear (default 7 sec.).
- Holding the phone while speaking or sliding the screen will be detected if the phone is fully visible.
- Function will start working when speed exceeds 20 km/h.



FATIGUE DETECTION

- The event is triggered by a continuous combination of eyes movement and head behavior logics (default 7 sec).
- In bright conditions, simply keeping eyes closed for the detection time, without tilting the head, will trigger the event.
- Function will start working when speed exceeds 20 km/h



DISTRACTION

- The event will be triggered when the driver turns his head to left or right exceeding the detection time (default 7 sec).
- Function will start working when speed exceeds 20 km/h.
- When wearing sunglasses and masks, this function is currently not supported.



SEATBELT DETECTION

- The event is triggered when it is detected that the driver is not wearing a seat belt (default 12 sec.).
- Function will start working when speed exceeds 20 km/h.
- The positioning of the driver facing camera is crucial for accurate detection, as the entire seatbelt must be visible.



SMOKING

- This event is a combination of hands behavior, object detection (cigarette or e-vaper) and smoke detection (blurry image), during a period of 7 seconds.

Part Numbers - Index

| | |
|--------------------------|--|
| CAM PRO | WORLD-WIDE MODEM (EXCLUDING NORTH AMERICA) KVL.001.00SIM.1 / NORTH AMERICA MODEM (MEXICO, USA, CANADA) 1KVL.017.00SIM.1) |
| CAM LITE | (WORLD-WIDE MODEM (EXCLUDING NORTH AMERICA) 1KVP.001.00SIM.1 / NORTH AMERICA MODEM (MEXICO, USA, CANADA) 1KVP.017.00SIM.1) |
| AUX CAMS | AUXILIARY DMS CAMERA CAM Lite - AUX.DMSLite 9KVL.001.02.1 CAM Pro - AUX.DMSPro 9KVP.001.20.1 AUXILIARY SQUARE CAMERA AUX.SQUARE Lite 9KVL.001.04.01 AUX.SQUARE Pro 9KVP.001.16.1 AUXILIARY REAR CAMERA AUX.REAR Lite 9KVL.001.03.1 AUX.REAR Pro 9KVP. 001.21.1 AUX DOME - AUXILIARY CAMERA AUX.DOMEPro 9KVP.001.18.1 AUXILIARY BSD CAMERA AUX.BSD Pro 9KVP.001.19.1 |
| LENS COVERS | CAM Lite Camera Cover 9KVL.001.05.1 CAM Pro Lens Cover Road 9KVP.001.09.1 CAM Pro Lens Cover Driver 9KVP.001.10.1 |
| CABLES ACCESORIES | Cable 1to4 CAM Pro 9KVP.001.00.1 Cable Extension 5M CAM Pro Male to Female 9KVP.001.01.1 Cable Extension 5M CAM Pro Female to Female 9KVP.001.24.1 Cable Extension 10M CAM Pro Male to Female 9KVP.001.02.1 CAM Lite OBD power supply 9KVL.001.01.1 CAM Pro OBD power supply 9KVP.001.04.1 CAM Pro Fast Connector 1to4: 9KVP.001.12.1 CAM Pro Spring cable: 9KVP.001.25.1 |
| OTHER ACCESORIES | CAM Lite/Pro Panic Button 9KVP.001.08.1 OBD Splitter CAM Pro/Lite 9KVP.001.26.1 |



Find out more:
+44 208 822 3605
webfleet.com