



Webfleet Route Deviation

Respond to deviations fast with automated route monitoring

Monitor planned routes in real time with instant deviation alerts. Boost visibility over route changes to prevent security risks, avoid fines for restricted zones and reduce detour-related costs.

No third-party integrations or extra subscriptions required. The simple setup saves planners and dispatchers time so you can boost your business' on-time delivery performance.

BENEFITS



ELIMINATE RISKS BY REACTING FASTER

24/7 real-time visibility into the execution of planned routes across your fleet enables you to check on a driver the moment a deviation occurs, avoiding unnecessary costs and security risks.



IMPROVE ON-TIME DELIVERY

Limit time wasted on deviations and cut out routes that are penalising your performance.



SAVE TIME AND EXPENSES

Avoid fines, unplanned tolls and cut fuel consumption caused by detours while encouraging drivers to stay on route.



FEATURES



INSTANT DEVIATION ALERTS

Get instant alerts when deviations occur. Managers receive alerts in Webfleet and via email; drivers receive them through Work App¹. All alerts specify the impacted planned route.



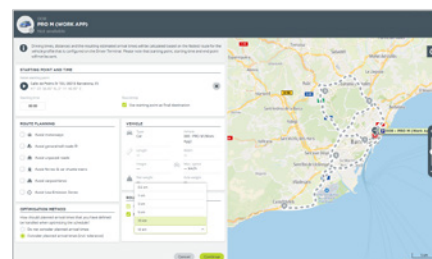
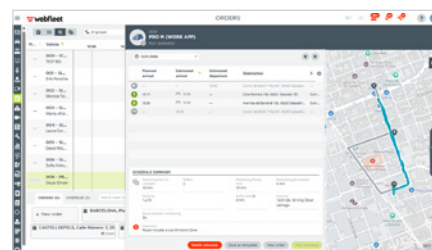
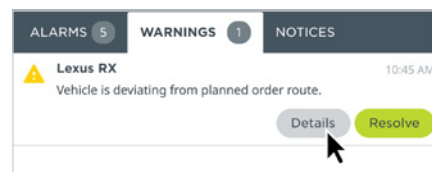
LIVE DETOUR DISPLAY ON MAP

Identify detours easily on the map in blue, layered on top of your planned routes in grey. Check on your drivers quickly, knowing exactly when and where the deviation occurred.



QUICK SETUP IN WEBFLEET, INTEGRATED WITH WORK APP AND TOMTOM GO FLEET.

Set deviation monitoring as a default for all orders planned in Webfleet and fix a tolerance of up to 10 km off course to avoid false positives. Share orders via the Work App and let drivers navigate with TomTom GO Fleet. From plan to execution, all in one place.



¹ Only available in the Android version

WHAT YOU NEED



**BIZ, APP-BIZ-1
or LIVE tariff**



**Webfleet Work App
(available in Android or iOS)**



Recommended



**PROFESSIONAL
NAVIGATION**

Let's drive business. Further.

webfleet.com

BRIDGESTONE
Fleet Care